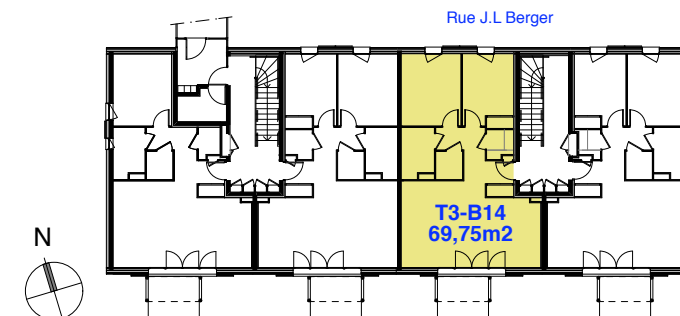
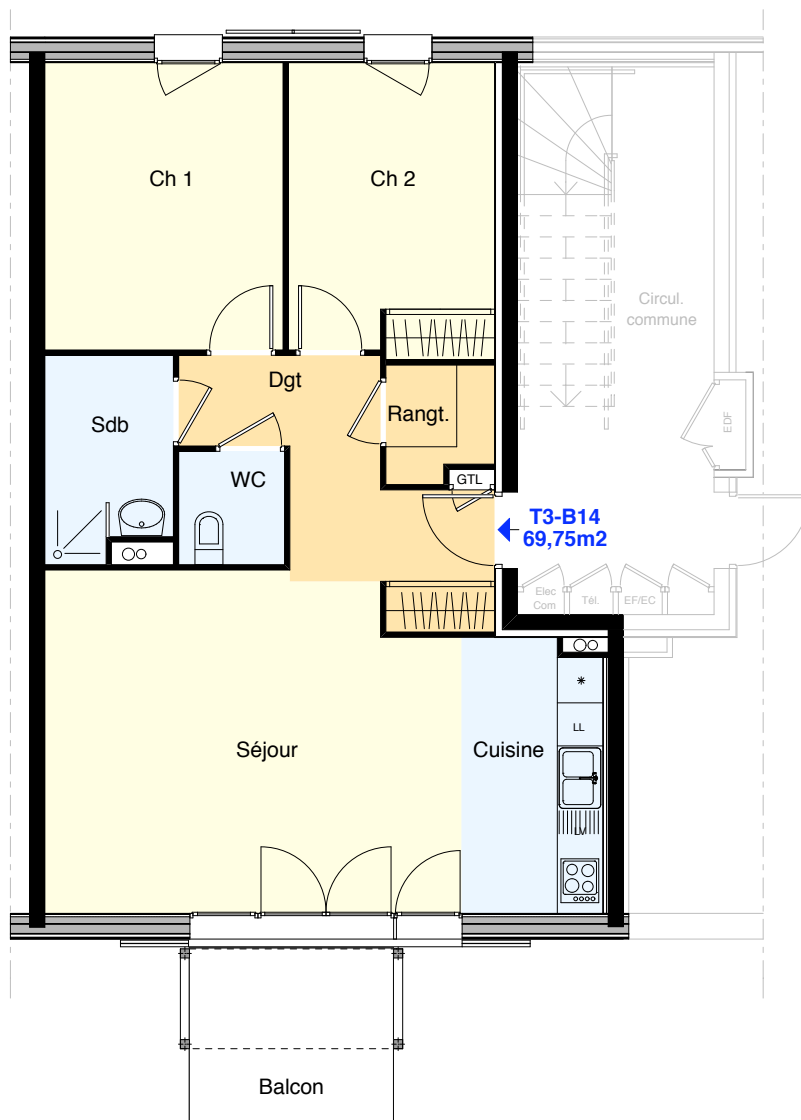


# " ENSEMBLE DE 20 LOGEMENTS LOCATIFS BBC "

20 - 22a & 22b - 24, Rue Jean Louis Berger - 42 290 SORBIERS



## BATIMENT B

T3-B14 : 69,75m<sup>2</sup>

NIVEAU R+1

### SURFACES HABITABLES

Cuisine	6,65m <sup>2</sup>
Séjour	23,90m <sup>2</sup>
Rangement	2,10m <sup>2</sup>
Dégt.+placard	8,15m <sup>2</sup>
WC	2,10m <sup>2</sup>
Sdb	4,40m <sup>2</sup>
Chambre 1	11,95m <sup>2</sup>
Chambre 2	10,50m <sup>2</sup>

**TOTAL 69,75m<sup>2</sup>**

Balcon 6,20m<sup>2</sup>